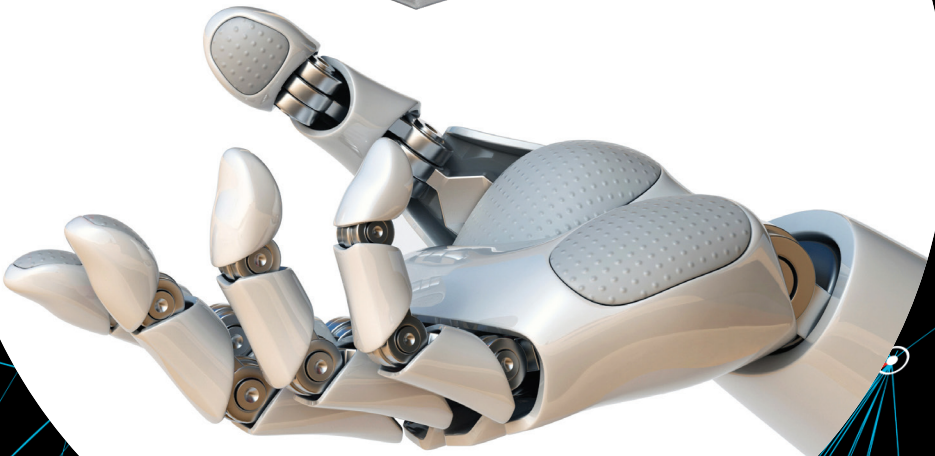
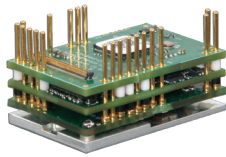


ADVANCED MOTION CONTROLS

FlexPro®

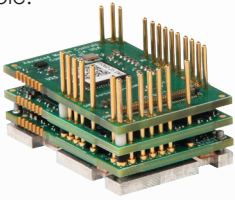


**Our Smallest,
Most Versatile,
Most Advanced,
Servo Drives**

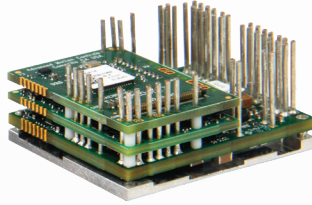
Growing doesn't always mean getting bigger.

In a new era of motion control, the FlexPro® family servo drives are small, versatile, high power, and designed to easily integrate into ever-tightening constraints.

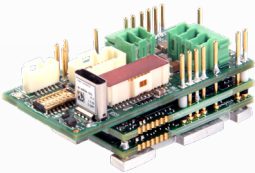
Versions available:



PCB Mount (Micro)



PCB Mount (Mini)



Machine Embedded (Micro)



Development Board (Micro)

Specifications and Features...

- **Voltage:** 10-55VDC and 20-90VDC
- **Current:** Up to 60A Continuous and 100A Peak
- **Micro Footprint:** 38 x 25 mm
- **Mini Footprint:** 38 x 43 mm
- **Absolute Encoder (BiSS C-Mode), Incremental Encoder, Hall Sensors, and Tachometer ($\pm 10V$)**

Perfect for...

- **Cobots**
- **Warehouse Robots and AGVs**
- **Portable/Mobile Devices**
- **Integrated Designs**
- **Lab Automation**

...And endless others!

Extended Environments (FX models)...

- **Temperature:** -40°C to $+95^{\circ}\text{C}$ (-40°F to $+203^{\circ}\text{F}$)
- **Thermal Shock:** Full temperature range in 3 minutes
- **95% non-condensing humidity**
- **Vibration:** 3 axes for 5 minutes at 25G rms
- **Altitude:** 25,000m

Networks...

EtherCAT[™]

CANopen

RS 232

RS 485

FlexPro® can also be the foundation for your custom solution!

ADVANCED
MOTION CONTROLS
Everything's Possible.

3805 Calle Tecate
Camarillo, CA 93012
www.a-m-c.com
805.389.1935